



Amy Hernandez
GLOBAL CONTENT LEAD

Single Container, Stellar Content

Close

Coca-Cola in the News



See All News

Hi, Amy

My Information

My Org Chart

United States

Change Content View

Workday



Visit Workday | Read More

Coca-Cola University



Visit CCU

Time & Weather

Add Location



Atlanta, Georgia, US
10:08 PM | 22°C | 71°F

Guest Wireless Access



This Week's Password



our ecosystem

Coca-Cola Connect



@Workplace

Microsoft Teams

Coca-Cola University

JIRA

Coca-Cola Customer Commercial Connect
THRED

SurveyMonkey

chatter

Lync
Enterprise Voice

box

workday

SharePoint



+

Coca-Cola

27,000 associates

75% employees

25% contingent workers



110 countries

17 business units



Manager



Employee



**Contingent
Worker**





Adobe
Experience
Manager

ATTIV/O®



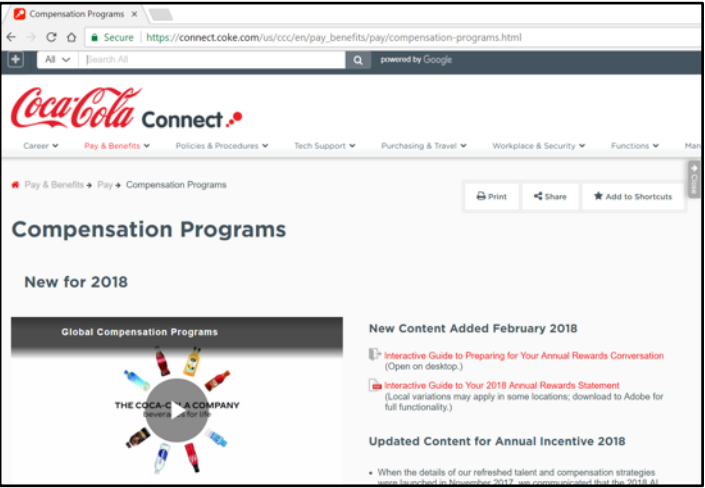
Google Analytics 360 Suite

workday®

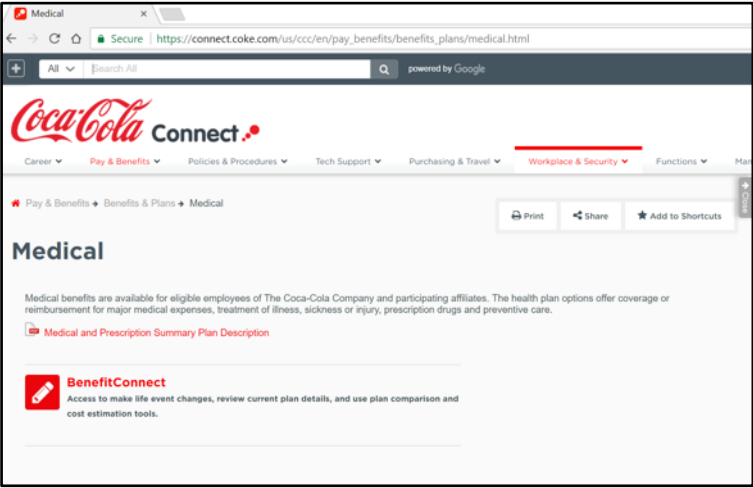
Azure

Coca-Cola

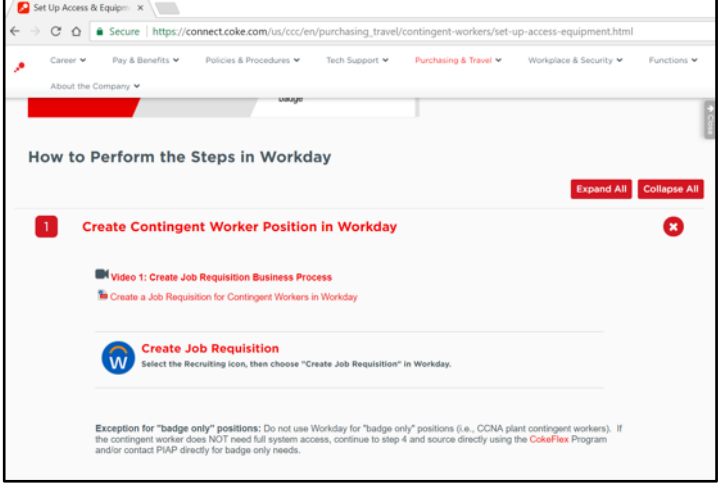
Global Content: Compensation Programs



Local Content: Medical (U.S.-Specific)



Hybrid Content: Contingent Worker page includes global content with U.S.-specific info about Coke Flex





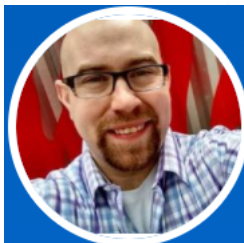
Amy Hernandez
Glob Content Lead
Baltimore



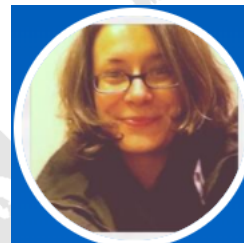
Anshul Chauhan
Sr Content Mgr
Toronto



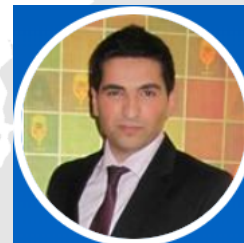
Chad Ligon
Content Manager
Atlanta



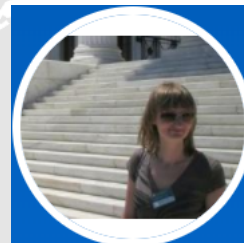
Robby Branson
Content Manager
Atlanta



Nadine Waldow
Content Manager
Warsaw



Eren Yaman
Content Analyst
Warsaw



Joanna Repec
Content Analyst
Warsaw



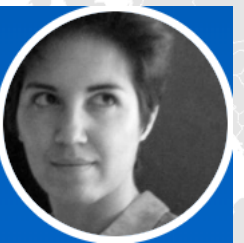
Marie Dunn
Int Engage Mgr
Atlanta



Kristin Kopp
Int Engage Mgr
Atlanta



Raquel Torres
Content Analyst
Atlanta



Emily Bucherati
Dig Comms Spec
Atlanta



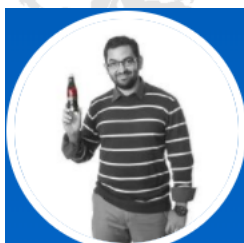
Cristina Condrici
Content Analyst
Warsaw



Sergio Giannone
Content Analyst
Warsaw



Jenny Fotia
Glob Dir– Digital Experiences
Atlanta



Ricardo Nassar
Content Manager
San Jose



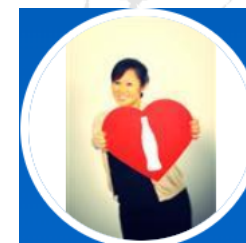
Ana Chong
Content Analyst
San Jose



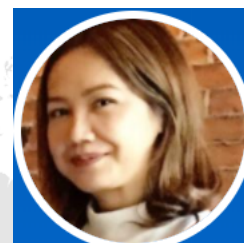
Michele Lillard
Internal Solutions Manager
Atlanta



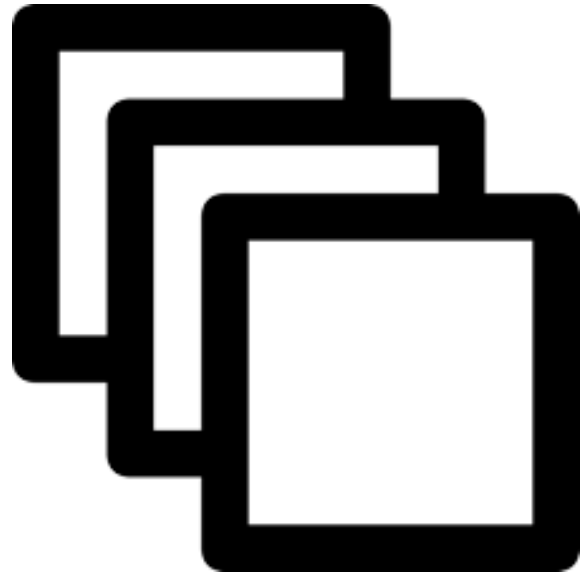
Nikki Conyers-Williams
Senior Content Writer / Editor
Atlanta



Jessie Fe Vidal
Content Manager
Manila



Trisha Icasiano
Content Manager
Manila



60,000 daily
page views



19,000 daily
visitors



4.5 minutes
per page

75% desktop



Coca-Cola



Hi, Robby

United States

Workday

Coca-Cola University

Time & Weather

Guest Wireless Access

Recommended Events

Shortcuts

Coca-Cola Connect

Career Pay & Benefits Policies & Procedures Tech Support Purchasing & Travel Workplace & Security Functions About the Company

Career Performance Enablement Performance Enablement Overview

Let's Get REAL Performance Enablement Overview REAL Stories

Performance Enablement Overview

Performance Enablement is now live globally!

1 Reflect

Monthly assessment of each direct report 5 minutes or less

2 Engage

Know your people focus your people

4 Listen

Monthly Upward Feedback survey

3 Align

The work that matters most

Performance Enablement

Refreshing Conversations

Trending Questions

How will this affect what we are currently doing?

What if priorities change?

What do we mean by informal conversations?

What if managers don't embrace the new approach?

Will there be a final performance rating or evaluation?

Share YOUR Questions

All FAQ

Individual Contributor

People Manager

Watch our REAL Webseries

Register for this session:

Let's Get REAL with Performance Enablement

Worksheets

Tutorial

Playbooks

English

Refreshing Conversations: Associate Playback (English)

NEW Manager Reflection and Upward Feedback Questions

Monthly Manager Reflection Questions

Monthly Upward Feedback

Why Performance Enablement?

The purpose of Performance Enablement is to mobilize our people around the work that matters most to execute our business strategy.

Performance Enablement involves 4 key ongoing routines:

Reflect

Engage

Align

Listen

Personalize your PC with PE

STOP!

Performance Enablement Search Results for Corporate, Q12 and Germany employees will follow. Further communications to follow.

© 2018 The Coca-Cola Company

Hi, Robby

United States

Workday

Coca-Cola University

Time & Weather

Guest Wireless Access

Recommended Events

Shortcuts

Coca-Cola Connect

Career Pay & Benefits Policies & Procedures Tech Support Purchasing & Travel Workplace & Security Functions About the Company

Career Performance Enablement Performance Enablement Overview

Let's Get REAL Performance Enablement Overview REAL Stories

Performance Enablement Overview

Performance Enablement is now live globally!

1 Reflect

Monthly assessment of each direct report 5 minutes or less

2 Engage

Know your people focus your people

4 Listen

Monthly Upward Feedback survey

3 Align

The work that matters most

Performance Enablement

Refreshing Conversations

Trending Questions

How will this affect what we are currently doing?

What if priorities change?

What do we mean by informal conversations?

What if managers don't embrace the new approach?

Will there be a final performance rating or evaluation?

Share YOUR Questions

All FAQ

Individual Contributor

People Manager

Watch our REAL Webseries

Register for this session:

Let's Get REAL with Performance Enablement

Worksheets

Tutorial

Playbooks

English

Refreshing Conversations: Associate Playback (English)

NEW Manager Reflection and Upward Feedback Questions

Monthly Manager Reflection Questions

Monthly Upward Feedback

Why Performance Enablement?

The purpose of Performance Enablement is to mobilize our people around the work that matters most to execute our business strategy.

Performance Enablement involves 4 key ongoing routines:

Reflect

Engage

Align

Listen

Personalize your PC with PE

STOP!

Performance Enablement Search Results for Corporate, Q12 and Germany employees will follow. Further communications to follow.

© 2018 The Coca-Cola Company



All ▾

Search All



powered by Google



Career ▾

Pay & Benefits ▾

Policies & Procedures ▾

Tech Support ▾

Purchasing & Travel ▾

Workplace & Security ▾

Functions ▾

Manager Center ▾

About the Company ▾

HR/IT Help

[Tech Support](#) → [Phones & Mobile](#) → [Enroll or Unenroll Device](#) → [Company Apple](#) → 1. Agent Setup

Print

Share

Add to Shortcuts

Close

Enroll Company Apple Device

These steps will assist you in enrolling your Apple device onto the company mobile device management server. They include instructions on how to conduct AirWatch Agent setup and enrollment on your iPhone or other Apple device. Once completed, your device will have access to company email, calendar, contacts and Wi-Fi.

You will need internet connectivity to continue. If you are at a TCCC location, you can use iGuest network access.

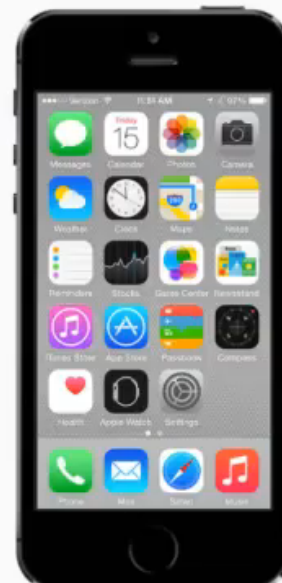
Company Apple

1. Agent Setup

2. Account Sign-On

3. Wireless Setup

1 Search for **AirWatch Agent** and download it from the Apple App Store.



Hi, Jenny

My Information |

My Org Chart



United States

Change Content View

Workday

[Visit Workday](#) | [Read More](#)

Coca-Cola University

[Visit CCU](#)

Time & Weather

[Add Location](#)Atlanta, Georgia, US
3:02 PM | 27°C | 80°F

Guest Wireless Access



This Week's Password

User ID: KOGUEST

Password: rtt(8584

Recommended Events

17 MAY


[Agile @ Coca-Cola Community Event](#)


powered by Google


5by20 Artisan Catalogue


ShopArtisansAboutCoca-Cola Connect


Shop


Snack Pack, \$11.50


Classic Flower, \$2.50


Classic Keychain, \$2.00


Canimal Elephant, \$25.00


Sirena Tote Bag, \$30.00


Maxi Purse Bag, \$45.00

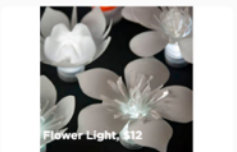
Shoulder Bag, \$42.00


Eclectic Bead Necklace, \$32.00


Narrow Ring-Pull Bracelet, \$4.00


Shop the 5by20 Artisan Collection

Coca-Cola Bottlecap Purse, \$15

Flower Light, \$12

Frames, \$16

Recycled Glass Pumpkin, \$30

Purse, \$12.00

Time & Weather

Atlanta, Georgia, US
10:54 AM | 29°C | 88°F


Shortcuts

PAC Place

ShopArtisansAboutCoca-Cola Connect

Canimal Elephant

\$25.00



Can*imal Elephant

Acacia Creations

This Can*imal is handmade in Kenya from recycled aluminium cans and bound with telephone wire.

Dimensions: 15 cm x 8 cm.
Available in other can designs.

\$25.00


I WANT THIS

Spotlights

Artisan Tutorial with Sarah Turner, Eco Art & design

5by20 How To Guide: Sarah Turner, E...


HOW DO YOU TURN THIS...





Artisan Tutorial with Jane Walker, Purple Community Fund

5by20 How To Guide: Jane Walker, P...

HOW DO YOU TURN THIS...








All

powered by Google

Categories



Playbook is a self-service online tool, owned by WEBU Procurement, providing the Marketing community with information on agency rosters and rules of engagement per category.

Select a Category for further Information

Procurement

Adaptation

Brand PR

CIC

Creative

Digital Marketing

Experiential

Media

Merchandise

Production

Market Research

Other Marketing Categories

New Agency

Glossary

FAQ


© 2017 (Playbook is an internal site of The Coca-Cola Company)
KO Sign IT | PSP | Worldwide Agency Operations | Procurement FAQ | Company Sourcing Policy | Feedback

All

Search All

powered by Google

Categories



Digital Marketing

All Categories

Procurement Team

Adaptation

Brand PR

CIC

Creative

Digital Marketing

Experiential

Digital Capabilities include Consumer Database, Brand and Corporate Sites, Promotion and E-Commerce Platforms as well as Marketing programmes that are consumer facing such as Smart Products and Coke TV.

Rules of Engagement

The Digital Review Process for digital integration is embedded within the Marketing Factory. The Digital Review helps brand, markets, and their agencies to develop innovative campaigns leveraging WEBU's digital owned connections platforms to help drive successful digital activations.

Central WEBU capabilities exist in order to:

- Drives down operational costs, releasing more budget for Content
- Creates consistency across digital platforms and functionality within WEBU
- Increases speed to market of activations
- Provides a digital framework for which agencies can create concepts against, no unfaisible ideas
- Enables both central IMCs and local market activations to use a consistent suite of tools

The overall Digital Review process flow with the functional ownership identified (see below)



<https://connect.coke.com>

<https://connect.coke.com/news/global/2017/connect-over-a-coke-julie-hamilton-vod.html>

https://connect.coke.com/news/north_america/2017/telling-our-story-character-story-launch.html

<https://connect.coke.com/news/global/2017/never-dine-alone-participants-share-their-stories.html>

https://connect.coke.com/us/ccc/en/career/performance_enablement/performance_enablement_overview.html

https://connect.coke.com/us/ccc/en/tech_support/phones_mobile/enroll_unenroll_device/company_apple_device/agent_setup.html

https://connect.coke.com/us/ccc/en/knowledge_exchange/knowledge_exchange/knowledge_exchange/marketing_expense_management_mem.html

<https://connect.coke.com/all/artisan/en.html>

https://connect.coke.com/all/webu_playbook/en.html

https://connect.coke.com/all/gbs/en/about_gbs/people/ann_taylor.html



THRED




Thank You!



Hello!



Bonjour!



こんにちは！



¡Hola!