

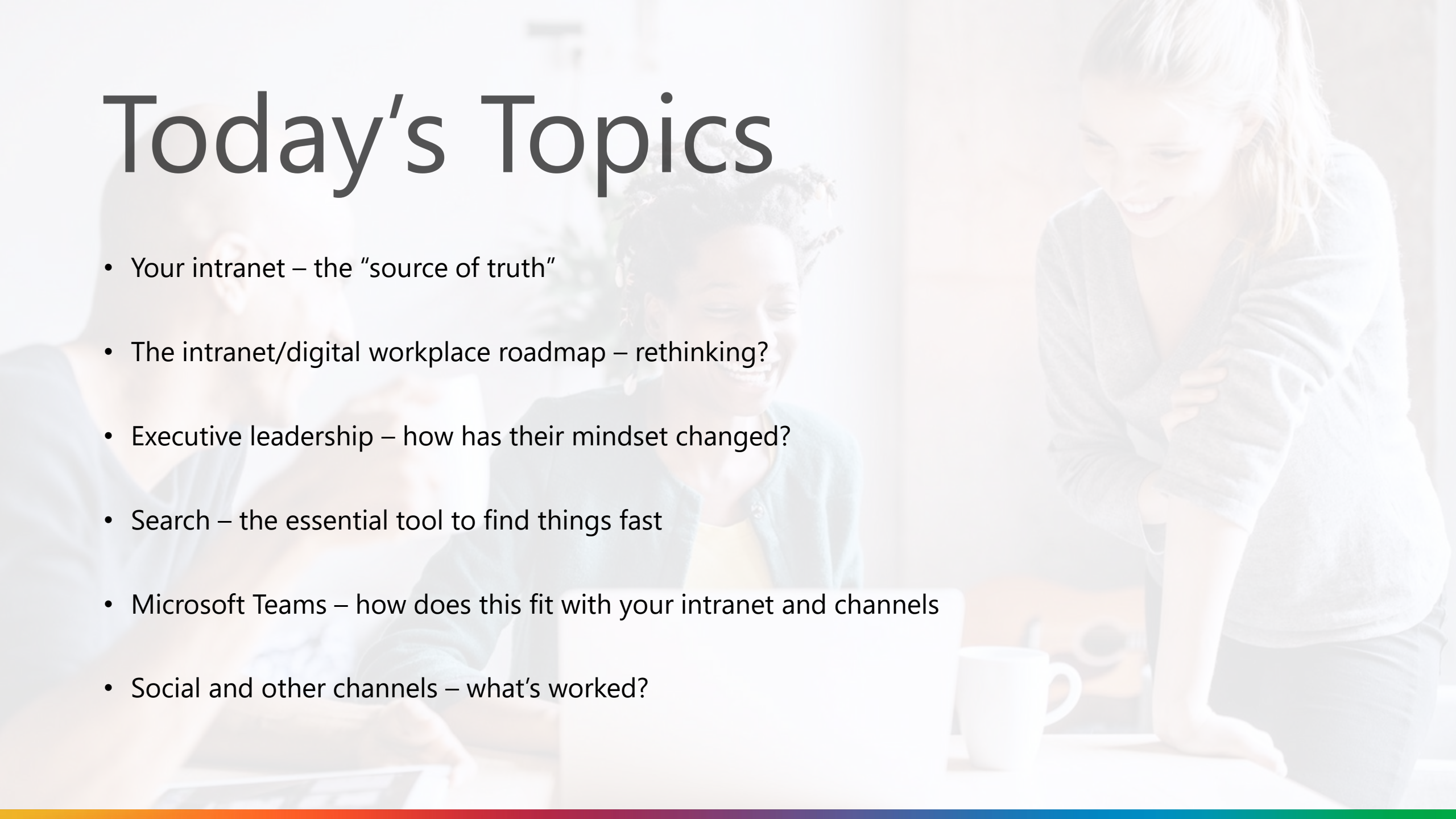


The Changing Landscape of Employee Engagement in the Post Covid-19 World

Panel Discussion

Today's Topics

- Your intranet – the “source of truth”
- The intranet/digital workplace roadmap – rethinking?
- Executive leadership – how has their mindset changed?
- Search – the essential tool to find things fast
- Microsoft Teams – how does this fit with your intranet and channels
- Social and other channels – what's worked?



Today's Panel



Jamie Stokes

Director, Digital Communications
Cox Communications



Kirsten Culbertson

Director, Employee Communications
Comcast NBCUniversal



Beth Gleba

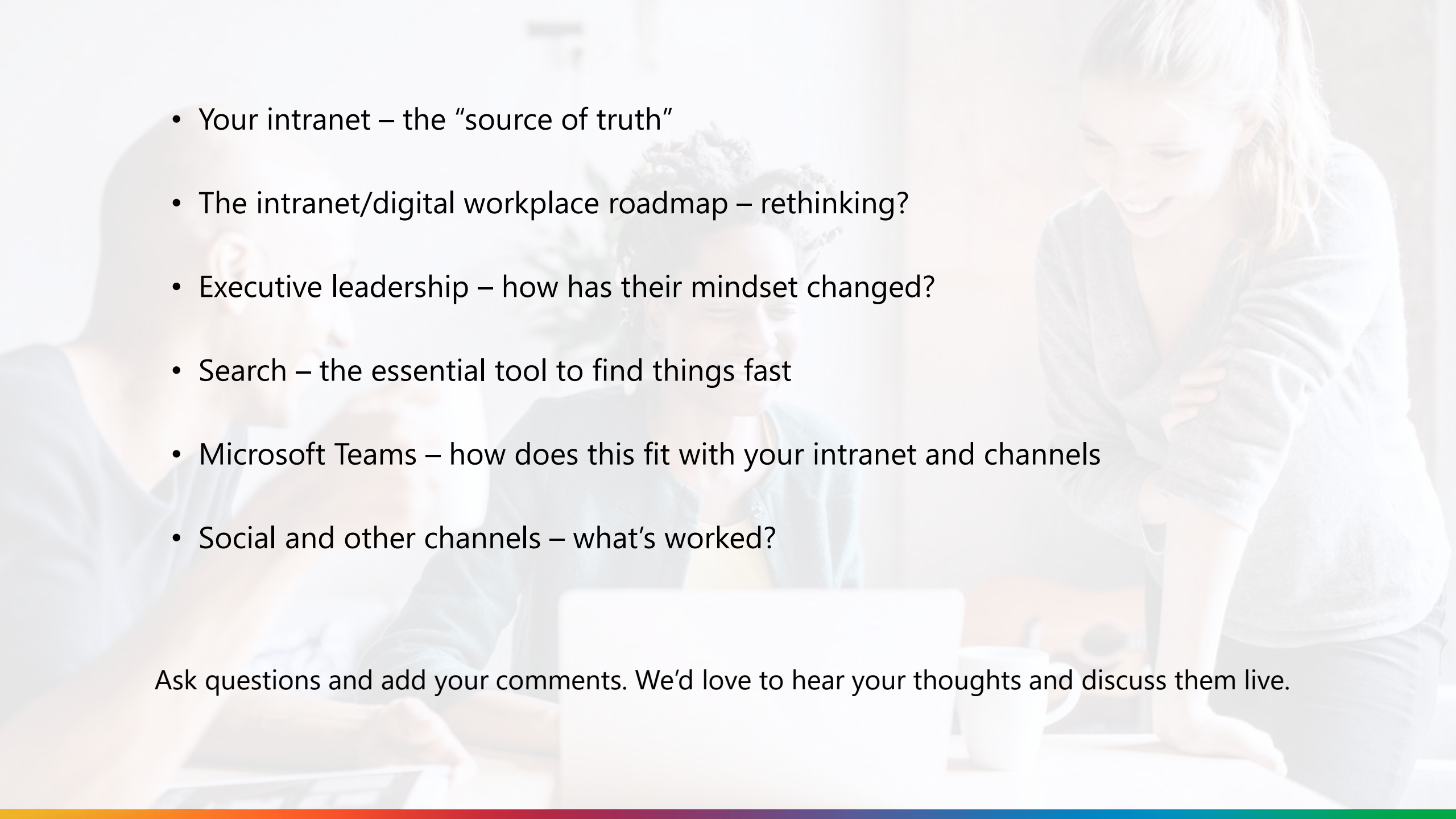
Director, Global Intranet
BCD Travel



Moderated by:

Chris Harrer

Executive Director, Internal Communications - Digital
Comcast NBCUniversal

- 
- Your intranet – the “source of truth”
 - The intranet/digital workplace roadmap – rethinking?
 - Executive leadership – how has their mindset changed?
 - Search – the essential tool to find things fast
 - Microsoft Teams – how does this fit with your intranet and channels
 - Social and other channels – what’s worked?

Ask questions and add your comments. We’d love to hear your thoughts and discuss them live.